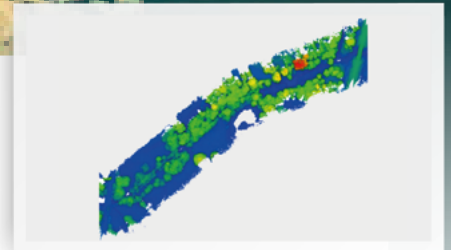


USE CASE

Riverbanks



« The number of projects done with our YellowScan system depends on the size of the projects, but we usually achieve 2 to 3 projects per week. » Andrejs Veliks, CEO, A-Geo



Business need

In the town's urban remodelling plans, the redesigning of the riverbank is a priority. Beautiful riverbanks attract people. At the moment, too many trees and bushes prevent access to ground data with traditional surveying methods.

A 2D topographic map and 3D points are the expected deliverables. These should help locate where the bushes are, where the ground is lowest/highest, if there are hidden objects. All this information enables architects to imagine the reorganization at best, evaluating how much work and material is needed.

Solution

YellowScan lightweight UAV LiDARs enable the quick and easy collection of detailed data about topography of the surveyed area, even where dense vegetation lies.

Acquisition

Two flights of 40 minutes each were necessary to map the riverbank. The data processing through YellowReader then TerraSolid took about a week, and delivering the expected deliverables (2D topographic map and 3D points) took another week.

Customer Profile

Company: A-Geo
Industry: Civil Engineering
Country: Latvia



Results

With a point density of around 100 pts/m² thanks to the YellowScan Mapper's 3 echoes the job was done much faster than a traditional survey, with high accuracy, precision, and low human risk.



Mission parameters

- Client: Town council
- Location : Latvia
- Survey Size : 3 km
- Duration : 80 minutes
- Number of flights : 2
- Flight speed : 18 km/h
- Flight altitude : 50-70m
- LiDAR system: YellowScan Mapper
- Base station: Stonex
- UAV: Colibri