

USE CASE

Landscaping



« Once you've tested YellowScan systems, you stay with it ! »

Andrejs Veliks, CEO, A-Geo

Business need

The Agricultural University of Latvia wished to map one of the main roads of Latvia. The aim was showing how the view could change as you travel through the country depending on the vegetation around that road.

Solution

YellowScan lightweight UAV LiDARs enable the quick and easy collection of detailed data about topography of the surveyed area, even where dense vegetation lies.

Mission parameters

- Client: Agricultural University of Latvia
- Location : Latvia
- Survey Size : 2 km²
- Duration : 3 hours
- Flight speed : 18 km/h
- Flight altitude : 50 m
- Base Station : Stonex
- UAV : Colibri
- LiDAR system : YellowScan Mapper

Benefits

- Rapid deployment
- Low human risk
- Ground data under vegetation
- High density LiDAR data
- Use of a UAV
- Access to difficult areas

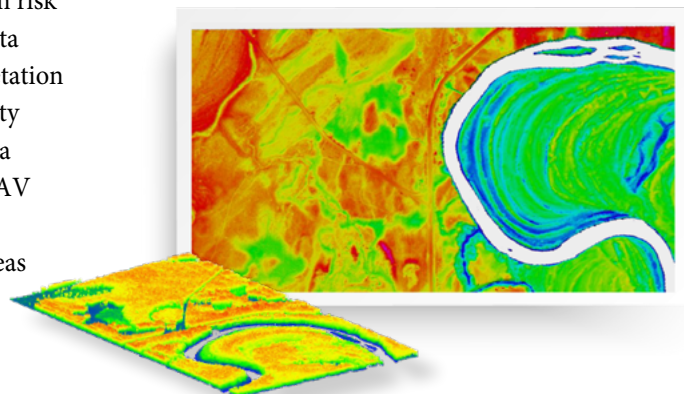
Customer Profile

Company: A-Geo
Industry: Civil Engineering
Country: Latvia



Results

With a point density of around 50 pts/m² thanks to the YellowScan Mapper's 3 echoes, the flight enabled an overview of a relatively small forested area between a river and the road. More than just a « Beauty project », the University was able to assess flood risks and was used for erosion assessment of the nearby river.



www.yellowscan.fr

YellowScan