



Trimble Clarity

APPLICATION

THE TRIMBLE CONNECT-BASED APPLICATION FOR SHARING RICH DATA AND IMAGERY

Until now, there was no easy way to share survey project data with clients. You could use Trimble software to create detailed scenes of project sites, but it took an enormous amount of data and a high level of expertise for anyone to be able to view those scenes, let alone navigate through them or make measurements from them.

Trimble® Clarity is a secure, Trimble Connect-based application that enables surveyors to easily share rich project data and imagery, allowing clients—even those who have no experience with engineering software—to view and use data in a web browser. The result: improved workflow efficiencies and greater situational awareness that enable more informed decision-making.

An Enhanced Experience, that Starts with Trimble Hardware

Trimble Clarity can have a significant positive impact on workflows. Nowhere is that clearer than with the Trimble SX10 scanning total station. The Trimble SX10 collects any combination of high-density 3D scan data, enhanced imaging with Trimble VISION™ technology, and high-accuracy total station data. With Trimble Clarity, you can process that data in Trimble Business Center software and publish the results to a Trimble Connect account for clients to visualize and collaborate.

The Trimble SX10 is just one example of Trimble hardware you can use with Trimble Clarity. Panoramas from all Trimble VISION instruments can now be visualized in any web browser.

Collaboration Made Easy. With Trimble Connect.

Together, Trimble Clarity and Trimble Connect give multi-disciplined teams access to a single, reliable source of geospatial data, enabling greater consistency and more-informed decisions that contribute to improvements in overall productivity.

There's no need to get a separate Trimble Connect account; with Trimble Clarity, you get Trimble Connect automatically. Then you can log in to Trimble Connect, enter your client's email address, and invite him or her to view the project you've uploaded.

When clients click on the Trimble Clarity link, they enter a Trimble Connect cloud-based viewing environment that allows them to navigate through the streamed data and to perform simple measurements. They can even create annotations and log in to a Trimble Connect account (at no charge) to share them.

With Trimble Clarity, clients have access to rich data in a full range of observation types, including: survey linework and points, point clouds, and station panoramas.

Trimble Clarity gives you explicit control of the client experience. It offers a familiar viewing environment and—most important—enables straightforward, productive cloud-based collaboration with only those clients you choose.

Key Features

- ▶ It is an easy to use system that allows cloud based sharing, visualization and measurements of rich datasets
- ▶ Our customers are in complete control of what is seen and by whom
- ▶ Our customers clients don't have to be experts in technical engineering software to view and use the data in their normal web browser

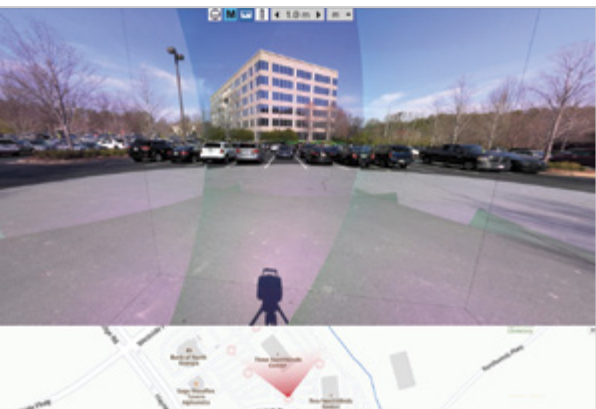
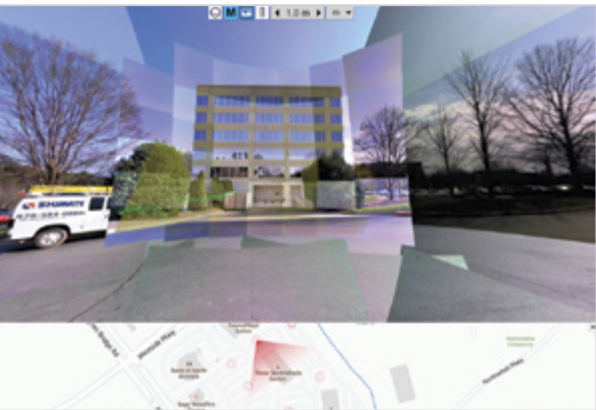




Trimble Clarity APPLICATION

KEY COMPONENTS

- ▶ Trimble Business Center which is used to process field data and produce usable information from the data
- ▶ Trimble Clarity Publisher that uploads project data from those applications to a Trimble Connect account
- ▶ Trimble Connect, which allows management of published projects and permissions of your clients to view the projects
- ▶ A web browser that enables clients to view the scenes



Contact your local Trimble Authorized Distribution Partner for more information

NORTH AMERICA
 Trimble Inc.
 10368 Westmoor Dr
 Westminster CO 80021
 USA

EUROPE
 Trimble Germany GmbH
 Am Prime Parc 11
 65479 Raunheim
 GERMANY

ASIA-PACIFIC
 Trimble Navigation
 Singapore Pty Limited
 80 Marine Parade Road
 #22-06, Parkway Parade
 Singapore 449269
 SINGAPORE