

ECHOES 5000

POLE MOUNTED OR TOWED SUB-BOTTOM PROFILER SOLUTION

ECHOES 5000 is an energy efficient and compact SBP system with an impressive bandwidth, allowing high resolution surveys in various operating conditions (lake, shallow & deep waters). Provided with DELPH SEISMIC acquisition software, it becomes a full-feature survey tool, easy to use, with a perfect balance between penetration and resolution.

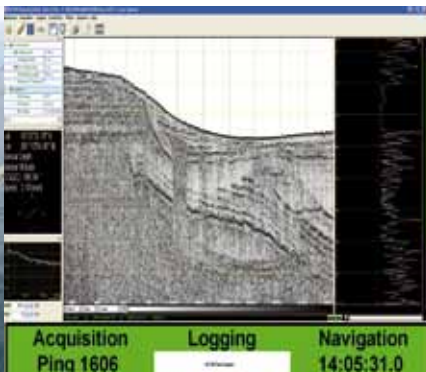
FEATURES

- Full package: fully integrated Towfish, PowerSupply and software
- Flat-spectrum, high power CHIRP emission
- 12.5 cm resolution & 213 dB equivalent acoustic level
- Up to 6000 m depth rated

BENEFITS

- Versatile towfish: pole mounted or towed
- Very low profile distortion
- Unparalleled data quality with good penetration
- All survey operating conditions

APPLICATIONS • Environmental, ports, lakes and waterways survey • Pre-dredging survey
• Buried objects detection and archaeology • Windfarms & renewable energies



DELPH SEISMIC ACQUISITION

- CHIRP selectable
- 24 bit raw data
- Segy 32 bits floating point
- Multi-ping management
- GPS and motion sensor interface
- Real-time waterfall

Photos courtesy of CNRS

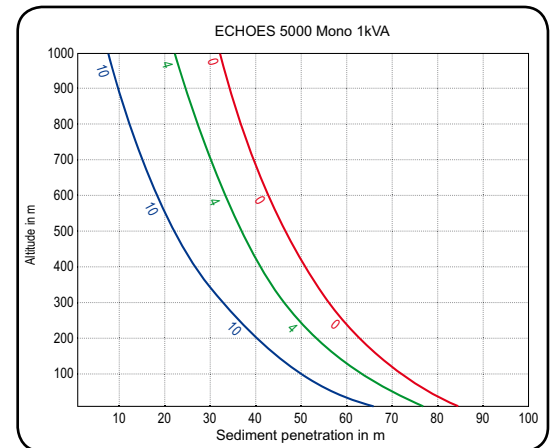
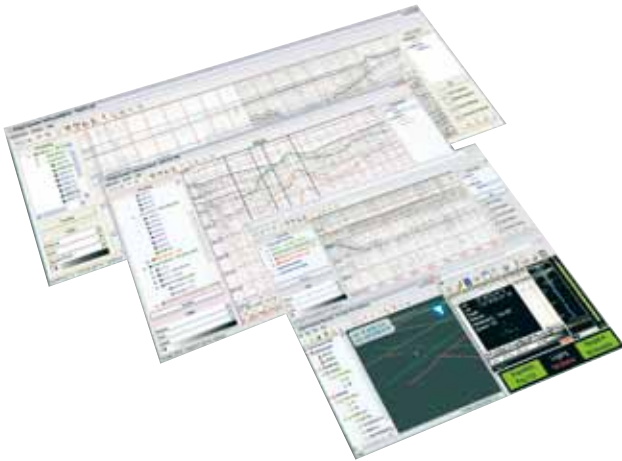


ECHOES 5000

TECHNICAL SPECIFICATIONS

PERFORMANCE

Operational depth	From shallow water to full ocean depth
CHIRP center frequency	5000 Hz
Transducer type	Janus Helmholtz
Antenna configuration	1 or 3 transducers
Frequency range	2 - 6 or 2 - 8 kHz
Resolution	up to 12.5 cm
Pulses	User selectable and defined
Bandwidth	4000 or 6000 Hz
Dimensions (L x l x H)	1835 x 800 x 800 mm
Weight in air/water	83 kg / 25 kg (300m depth rated)
Typical mount	Fish (either towed or pole mounted)
Depth rating	30 m / 300 m / up to 6000 m
Transmission Power	1 kVA



For clay-like sediment on rock bed

2012-02-PS-EC45000

Specifications subject to change without notice

www.ixblue.com • EMEA +33 1 30 08 88 88 • AMERICAS : +1 781 937 8800 • APAC : +65 6747 4912

