

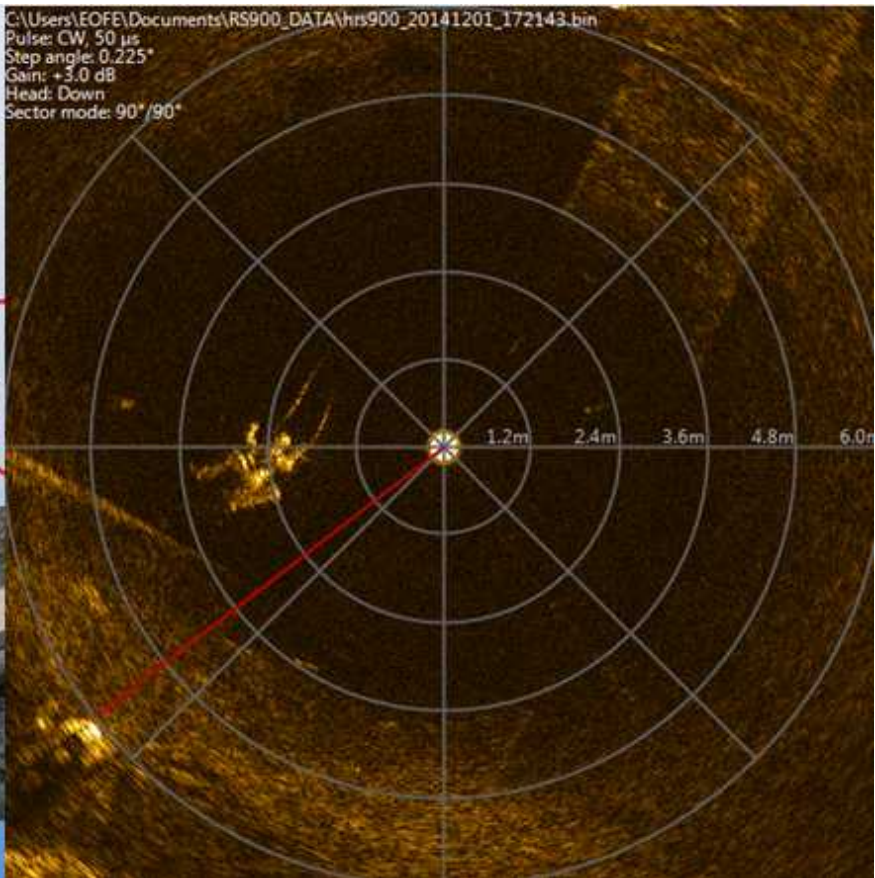
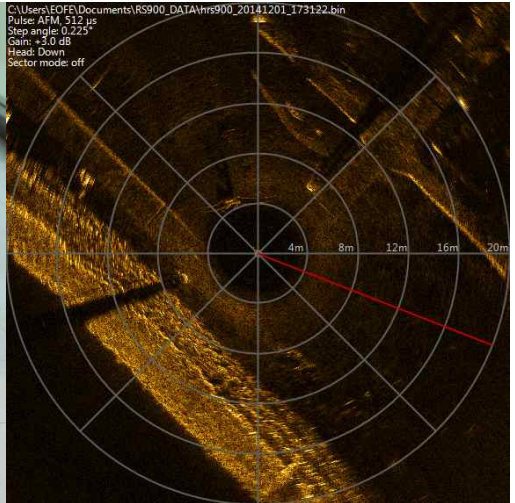
# Echologger RS900

## High Resolution Scanning Sonar



### Features

- High-resolution Imaging Sonar
- Contactless Rotating Mechanism – no friction, no weariness
- High Scanning Speed
- Motion compensation



## Specifications

Pulse	CHIRP & CW
Driving Freq.	900 kHz
Beam Angles	H0.8°, V30.0°
Max. Range	60m
Range Resolution	15 mm @50kHz , 7.5 mm @100kHz sampling
Rotational Contact	Noncontact Transformer
Angle Resolution	0.1125°, 0.225°, 0.45°, 0.9°, 1.8°
Max. Scanning Speed	4sec @ 5 m, 0.9°
Transmitting Pulse Length	512 us (CHIRP), 10 - 100us (CW)
TVG	60 dB
Gain Control	-30 dB ~ +30 dB
Interface	RS232/RS485/RS422
Power Supply	12 - 72 VDC, 6W Max
Data Transmission	2 Mbaud @300m , 115200 baud @1 km
Connector	SUBCONN MCBH4M (MCBH8M)
Depth Rate	1000 m
Material	Al (Hard Anodised)
Dimensions	Dia. 140 mm, Height 120 mm
Weight	2.6 kg(air) / 0.9 kg(water)