

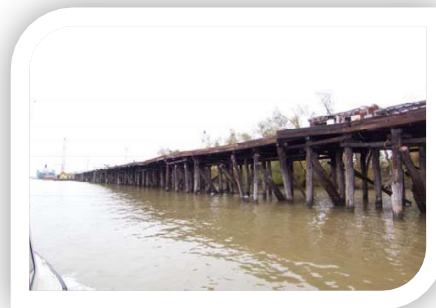


www.bathyswath.com  
support@bathyswath.com

<b>Reference</b>	SN-0602
<b>Classification</b>	Unclassified
<b>Version</b>	1.00
<b>Date</b>	December 2006

## Survey note: New Orleans, Louisiana, USA

---



*The information contained herein is the property of Bathyswath (sales@bathyswath.com) and is supplied without liability for errors or omissions. No part may be reproduced except if a written permission is given by the company. The copyright and the foregoing restriction on reproduction extend to all media in which this information may be embodied.*

---

*The information contained on this sheet is subject to restrictions listed on the cover page of the document*

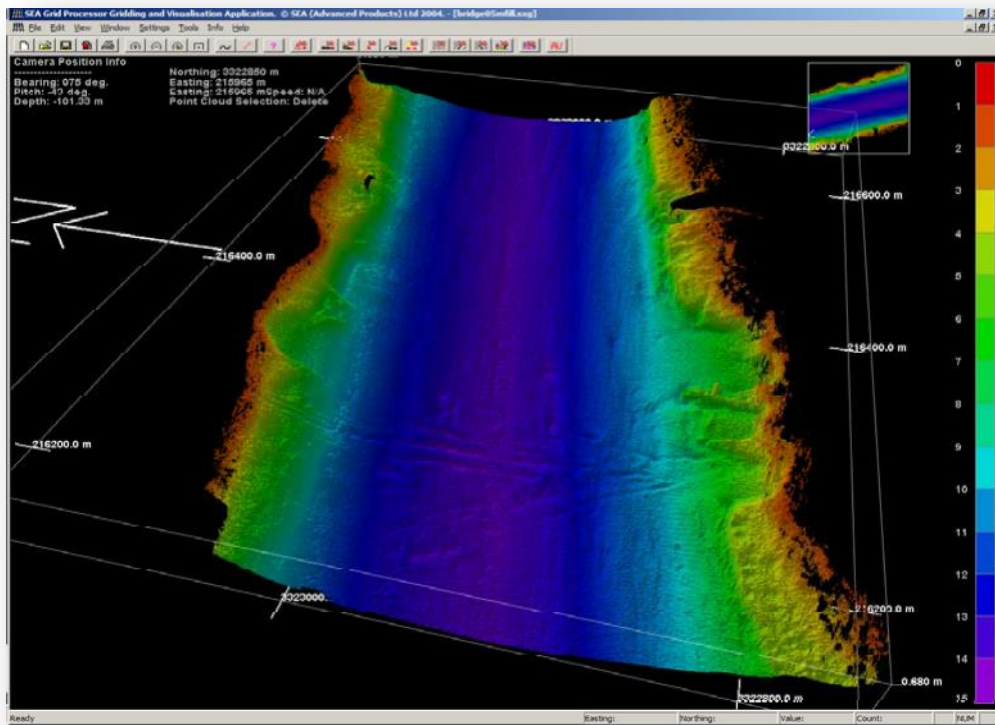


**1 SYSTEM USED**

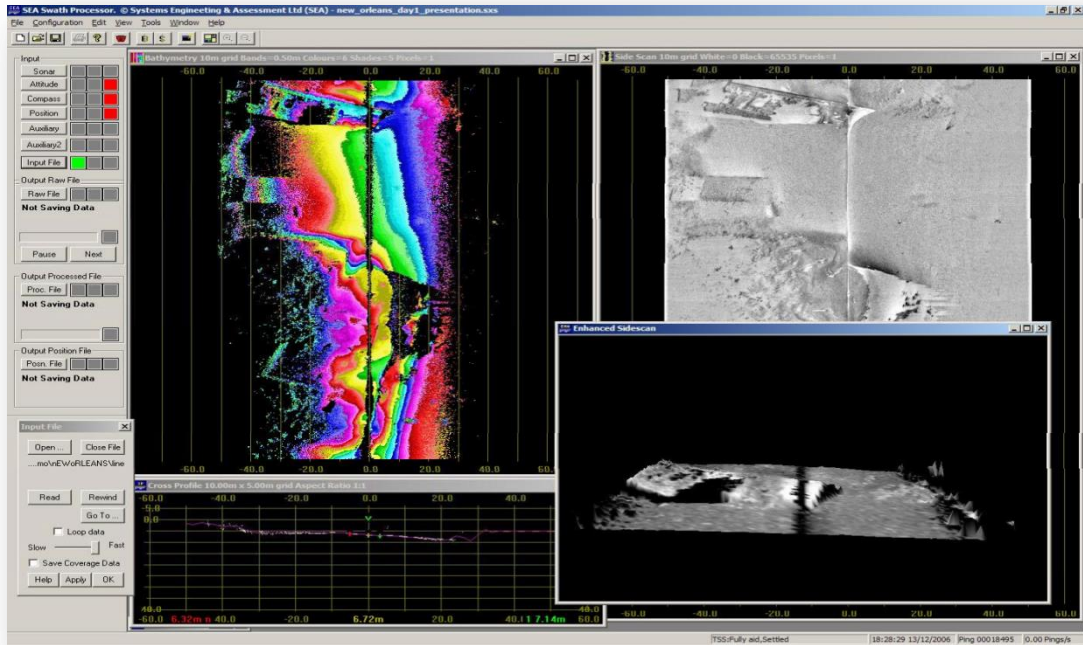
Sonar: Bathyswath-1 (SWATHplus) - 468 kHz  
 Motion sensing and positioning: Coda-Octopus F180

**2 SURVEY DESCRIPTION**

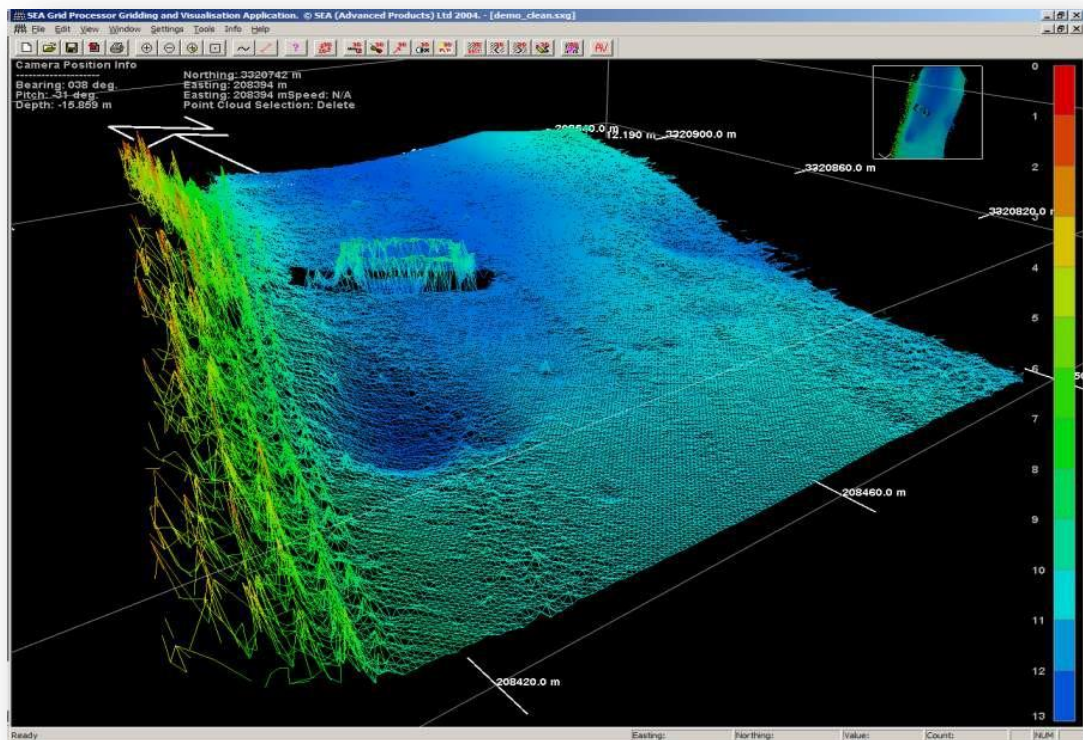
This was a trial for John Chance Land Survey on the Gulf Outlet Canal in New Orleans. The survey consisted of a number of small area surveys along the canal and a survey along both shores of the Mississippi River in New Orleans. The survey areas ranged from 1km to 4km in length, in water depths of 0m to 45m. The surveys were undertaken in a day, with a day of preparation and boat mobilization in Lafayette.



**3D bathymetry of Gulf Outlet Canal bridge survey site**



**Real-time views of barge wreck on Gulf Outlet Canal**



**3D bathymetry view of barge wreck close to a quay**

*The information contained on this sheet is subject to restrictions listed on the cover page of the document*