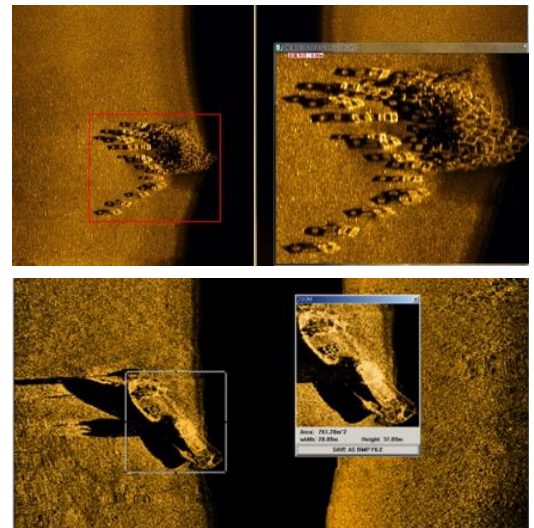
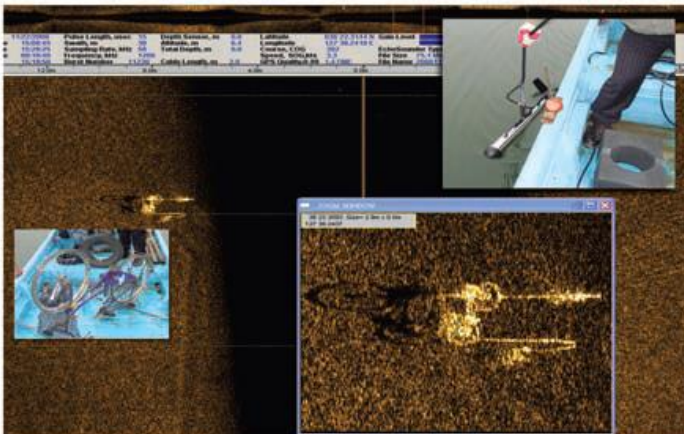


SonarBeam® has supplied various side scan sonar systems from single, dual to multi beam. SonarTech invites you to SonarBeam® world dreaming of powerful and valuable frontier in the fields of underwater sonar equipment.

SonarBeam® Side Scan Sonar Series

- Price Competitiveness
- The Most High Resolution Images
- Single Freq.: 100, 400, 900, 1250kHz
- Dual Freq.: 100/400, 400/900, 400/1250kHz
- Multi Beam: 455kHz (3, 5 beams)
- Portable topside processor
- Compatible with Hypack/GeoDas/SonarWiz
- Real Time Post Processing, Mosaic Software
- Kevlar Reinforced Tow Cable
- Motion/Depth/Altimeter equipped



Side Scan Sonar Towfish Series



S-150P

- Ultra-Light Weight Towfish
- Size : 900×ø89 (mm)
- Weight : 12 kg (in air) / 8.5 kg (in water)
- Single Frequency : 400, 900, 1,250 kHz
- Dual Frequency : 400/900, 400/1,250 kHz
- Maximum Depth : 100 m
- Beam Tilt : 20 degree down fixed



S-150A

- Light Weight Towfish
- Size : 1,026×ø89 (mm)
- Weight: 16 kg (in air) /10.5 kg (in water)
- Single Frequency: 400, 900, 1,250 kHz
- Dual Frequency: 400/900, 400/1,250kHz
- Maximum Depth: 300 m
- Beam Tilt : 10, 20, 30 degree down adjustable
- Altimeter Sensor : 200 kHz, 20 deg



S-150D

- Deep Water Towfish
- Size : 1,360×ø112 (mm)
- Weight: 32 kg (in air) /25.5 kg (in water)
- Single Frequency: 100 , 400 , 900 , 1250 kHz
- Dual Frequency: 100/400, 400/900, 400/1250kHz
- Maximum Depth: 300 m
- Beam Tilt : 5, 10, 15, 20, 25 degree down adjustable
- Altimeter Sensor : 200 kHz, 20 deg

- Material : Stainless Steel
- Beam Angle
100kHz: 1.2deg(H), 40deg(V) 400&900kHz: 0.3deg(H), 40deg(V) 1,250kHz: 0.3deg(H), 30deg(V)
- Transmission Pulse
100 kHz: 50 ~200 μ s, 400 kHz: 25~150 μ s, 900 kHz: 15~50 μ s, 1,250 kHz: 10~25 μ s
- Swath (Max.)
100 kHz: 1,000 m, 400 kHz: 300 m, 900 kHz: 100 m, 1,250 kHz: 60 m
- Depth Sensor: 0.5% Full Scale
- Motion Sensor: Heading, Pitch, Roll

[Safety Recovery System]

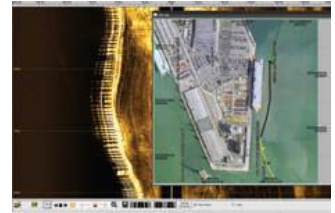
- Safety Pin: Up to 200 kg Shear Strength, Tail Fins, Underwater Location System - Transmitters

Sonar Operating Software

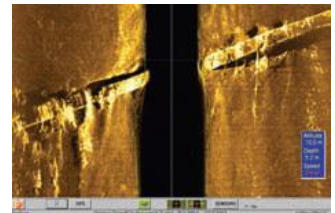
RealScan®

SonarBeam Real Time Operating S/W

- RealScan® is the software of SonarBeam Side Scan Sonar systems which serve as the data acquisition and display in real-time signal output from the towfish.
- Operating System: Windows XP Professional, Vista, Windows 7
- Show the Towfish's Course
- Automatic Gain Control Function
- Real-Time support the Towfish's Depth, Altitude Information
- Real-Time support the Towfish's Motion Info.(Roll, Pitch, Heading)
- Image Filtering & Target Marking
- Transducer Protection Function
- XTF File Format & GPS & Target Image (JPG, PNG)
- Survey Routes Planner & Screenshot Function



(Map Overlay)



(Sunken Bridge)



(Survey Route Planner)

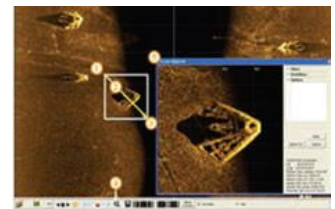
PostScan®

SonarBeam Post-Processing S/W

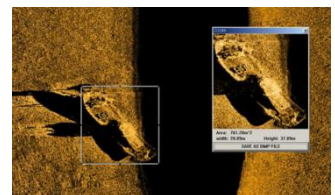
- PostScan® is post-processing software and makes it possible to analyze the acquired sonar data.
- Operating System: Windows XP Professional, Vista, Windows 7
- Mosaicking & Partial Mosaicking Function
- User can control the resolution of mosaic image
- Varied Mosaic Output Format (PNG,BMP,JPG,TIF)
- KML file & GeoTiff file Support
- Support the text file of recorded Towfish information (Towfish's Coordinate, Altitude, Depth, Speed information etc.)
- Towfish Course Filter Function & Altitude Line Correction Function
- Target 1×1 scale Image Capture
- XYZ Mosaic & Image Save Function
- Target Measurement & Image Zoom Function



(Target Measurement)



(Partial Image Zoom)



(Shipwreck)

Compatible Software

SonarBeam Towfish is compatible with Hypack, SonarWiz and GeoDAS



(Google Earth Mosaic)

CONSTITUTION



Portable Deck Control Unit

Deck control unit controls the parameters of signal processing and receives the data from towfish to make 2-D image and display on the monitor with other information.

- Weather-tight Pelican Case
- Navigation: GARMIN GPS (Compatible with user GPS)



Hand-held Reel



Portable Battery Box



Interface Control Unit

- Weather-tight Pelican Case
- Navigation: GARMIN GPS
Compatible with user GPS



Tow Cable



Depressor Wing

The LEADER of Underwater Technology

