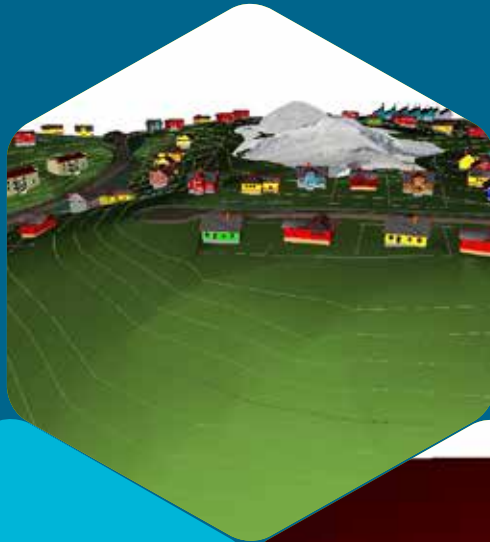


TOPOCAD

- streamlines your workflow,
from the collected data
to the finished design



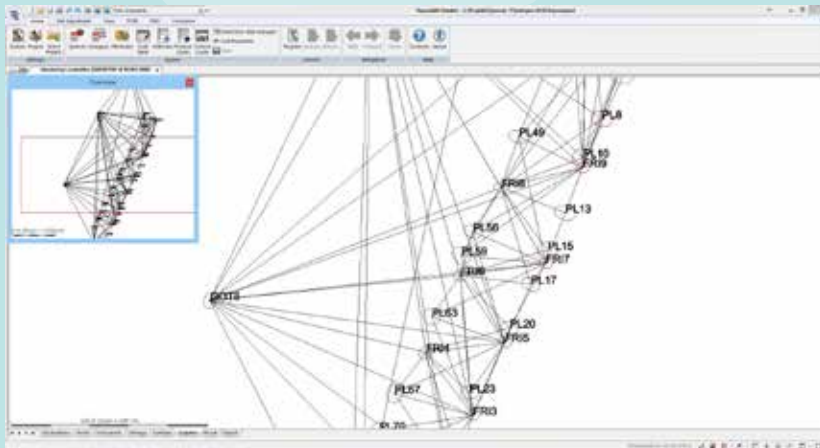
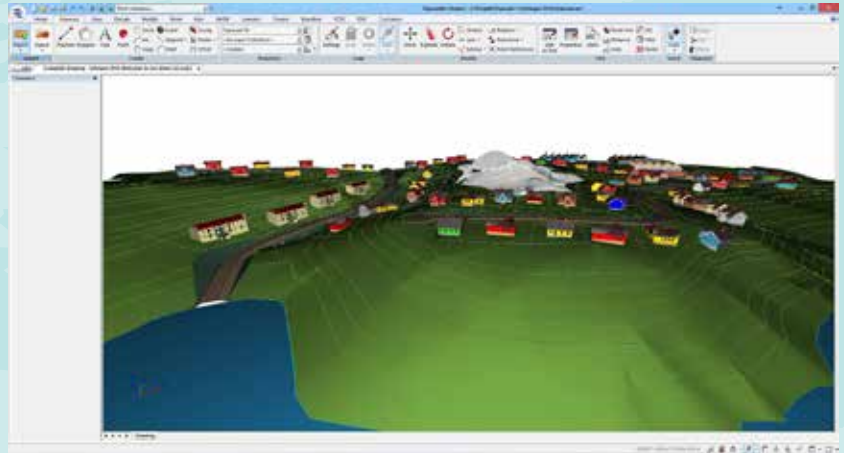
ADTOLLO
ADDNODE GROUP

developers of Topocad



CAD

Topocad is a CAD system made for surveying, designing and mapping. Topocad is close to GIS but also BIM, it contains a lot of computing functions for Geodesy and supports designing. Communication is made with field instruments as well as other design systems, GIS systems or databases. Topocad is a stand-alone package with no other CAD engine and Topocad has a lot of connections both to GIS but also full support of solids and BIM.



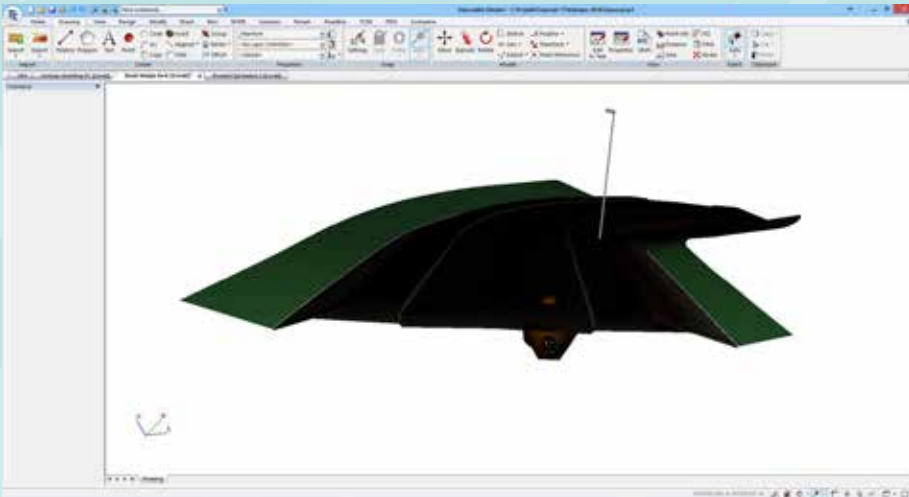
Surveying

Measurement is the underlying basis of Topocad, which can communicate with most instruments. Topocad supports import and export of a wide range of formats for data such as polar data, coordinates, leveling data, GNSS data with both LAT / LONG and base station vectors. Topocad allows you to take your project all the way from the field to the drawing and to solids and BIM. In addition, Topocad has an effective Net adjustment calculation module.

Mapping

Topocad creates maps with any type of symbols and line types and uses a lot of tools for editing and creating surfaces and polygons. Maps are easily stored in any database using one of the four adapters: ArcGIS, FDO, ISM or direct to Postgresql using the TC5D extension. Maps can be 2D or 3D and thanks to the close relation with GIS, Topocad has no problem to store data to GIS systems nor to adapt data from GIS systems.



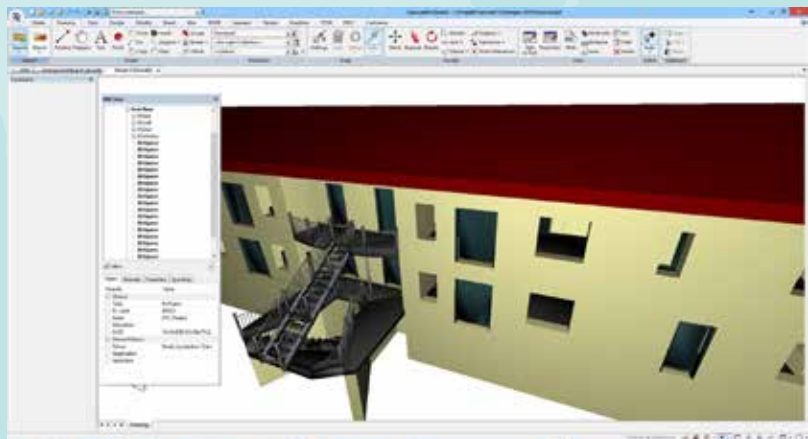


Design

Topocad is a complete 3D CAD system with good features for designing an excavation, roads, tunnels and sewage ditches. With the help of three different modules: geometries for longitudinal road lines, volume calculation models for the calculation of excavation and volume sections for all handling of cross sections. Result from cross sections and design is automatically transferred to solids, BIM ready.

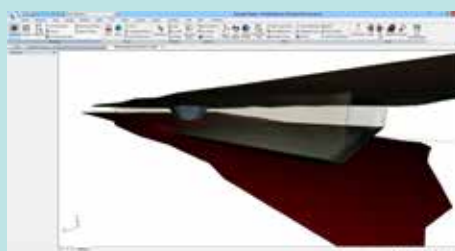
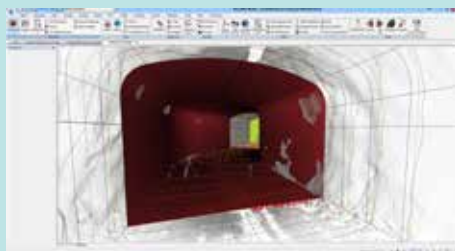
BIM

Topocad works with data and objects that are measured, designed, planned, digitized. Topocad supports IFC, VRML, OBJ and PREP files. Topocad BIM offers a variety of functions for creating solids but also unique ways to measure solids, to design solids and to calculate volumes with solids as result.



Point cloud

Topocad Point cloud is an efficient module for the use of large point clouds. Topocad Point cloud has a couple of filtering functions for intelligent reducing the amount of points, a vectorising function to create surfaces and another for finding cylinders in the cloud. Point clouds in Topocad can be used for all kinds of calculations where you formerly used terrain models such as contouring, volume calculations, cross sectioning, tunnels. There are also a specific function for comparing point clouds towards your solids.



Volume calculation

The Volume module calculates volumes between any number of terrain models on top of each other and directly presents the result as cross sections, longitudinal profile, reports but also as solids in the drawing. These are easily edited and shown with the volume report generator.

TOPOCAD

Topocad is a flexible and modular 3D CAD system, allowing you to import and combine a wide range of formats, all while maintaining the original file format data.

Now, you can combine point clouds with traditional types of measurements and data collection to quickly and meticulously create fully interactive 3D models.

Learn more at
adtollo.se/en