

USER MANUAL (March 2016)

Settop RadioLink



SETTOP

Index

SETTOP RadioLink	2
Batteries.....	3
RadioLink.....	4
Led indicators	5
Communication Ports	5
BASE mode	6
REPEATER Mode	8
SETTOP REPEATER Mode.....	9
ROVER mode	11
Software Settings	12
RadioLink – ADLCONF Settings	13
Factory Default Settings	13
Identification	14
Radio Link.....	15
Serial Interface	16
Frequencies	17
Combinations supported.....	18

SETTOP RadioLink

This guide provides a general overview of the basic characteristics and instructions for setting up the Settop RadioLink receiver and being able to operate with it in a simple way.

Step 1: Fully charge the batteries. Screw in the antenna and connect the batteries.

Step 2: Set up the radio in the desired manner. Learn about the functionalities of the LEDS.

ADDITIONAL INFORMATION

Thank you for the trust you have invested in the SETTOP brand for carrying out your professional activities. Remember that you must refer to our website www.settopsurvey.com for information on settings, quick guides, etc.

The purchase of the equipment includes the warranty in accordance with the equipment supplied (labour and replacement of defective parts), starting on the date of delivery. The SETTOP Customer Service will help you with any problem related to your new device. You may contact us at support@settopsurvey.com

Likewise, purchasing the equipment includes SETTOP Customer Service (during the Warranty period), starting on the date of delivery. SETTOP Customer Service will help you with any doubts regarding the handling of the equipment, its setting and its start-up. You may contact us at support@settopsurvey.com Once the warranty has expired, you may opt for the **annual warranty extensions**. Do not wait for the expiration of the warranty to contract the extension.

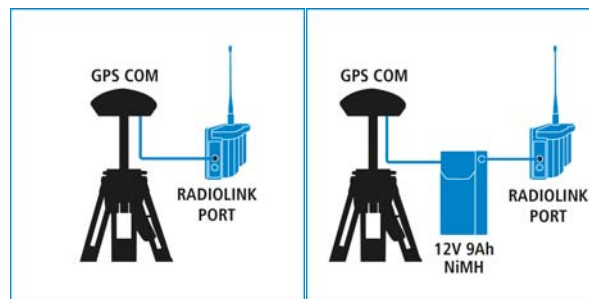
Batteries

The system is powered by 2 7.2V Lithium-Ion batteries, with an approximate autonomy of 11 hours in basic mode.



The two batteries must be inserted by sliding them through the flaps. To extract the batteries, press on lower flaps, sliding the battery in the opposite direction.

One may also use a 12V-18V external battery using AUXPORT.



RadioLink

The SETTOP Radio-Link system offers numerous setup possibilities. It may be set up in:

- **Base Mode.** The SETTOP RadioLink is connected to a GNSS receiver in order to transmit corrections.
- **Repeater Mode.** The SETTOP RadioLink is set up to repeat the signal of a base station.
- **SETTOP Repeater Mode.** The SETTOP RadioLink is connected to a SETTOP Repeater device so as to transmit the differential corrections via radio received through an NTRIP protocol. ,
- **Rover Mode.** The SETTOP RadioLink is connected to a GNSS receiver so as to receive corrections.



Led indicators

Once the SETTOP RadioLink device has been suitably connected.

- **LED TX** (Transmit) must be constantly flashing.
- **LED RX** (Receive) must be *off* when in Base mode*; in Repeater mode, it must flash, alternating with the TX.
- **LED POWER** must be permanently *on* when it is being powered.

***NB:** In Base mode, the LED might flash if there are external sources of interference.

Communication Ports

- **Aux PORT** : this makes it possible to set up the Settop Repeater if the Settop RadioLink is attached. It also allows use of a 12V-18V external battery

BASE mode

Connect the SETTOP RadioLink to a GNSS receiver to transmit corrections.



To proceed to the connection of the SETTOP RadioLink, you have numerous options:

Method 1:

The GNSS receiver is powered by an internal battery. The setup requires:

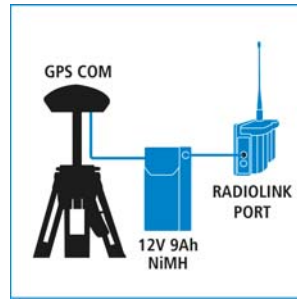
- 1 SETTOP RadioLink
- 2 Lithium Batteries
- 1 Radio antenna
- 1 Power cord



One end of the Power cord is connected to the *Radio Link Port* of the SETTOP RadioLink device and the other end is connected to the GNSS receiver

Method 2:

The GNSS receiver is powered by an external battery.



The setup requires:

- 1 SETTOP RadioLink
- 1 Radio antenna
- 1 Power cord
- 1 System cable



One end of the Power cord is connected to the GNSS receiver and the other end to the SETTOP battery. As for the system cable, one end is connected to the second connector of the SETTOP battery and the other end to the *Radio Link Port*

Once the SETTOP RadioLink device has been correctly connected to the GNSS receiver, the next step is that of setting up the base. Following the setup, the LED TX must be constantly flashing. The LED RX must be off. The LED POWER must be permanently on when it is being powered.

REPEATER Mode

The SETTOP RadioLink is set up to repeat the signal of a base station.



The setting of the radio in repeater mode must be carried out before the field trip.

When the batteries are connected, the radio automatically turns on, starting to receive the corrections from the base and to immediately transmit them, expanding radio range.

The LED TX must be constantly flashing; the LED RX must also be flashing and alternating with the TX. The LED POWER must be permanently on when it is being powered.

SETTOP REPEATER Mode

The SETTOP RadioLink is connected to a SETTOP Repeater device so as to transmit the differential corrections via radio through an NTRIP protocol.



The SETTOP RadioLink adjusts perfectly to the SETTOP Repeater device at the back. By means of the connectors and two screws, the devices are perfectly and tightly joined.



At the moment of the SETTOP Repeater being turned on, it will take charge of automatically setting up the SETTOP RadioLink. The device may be placed on a tripod and in an area with GPRS coverage.



ROVER mode

The SETTOP RadioLink is connected to a GNSS receiver so as to receive corrections.

Installation:

The ring bracket is fastened to the rod with the set screw. This bracket will keep the SETTOP RadioLink stable in the rod.



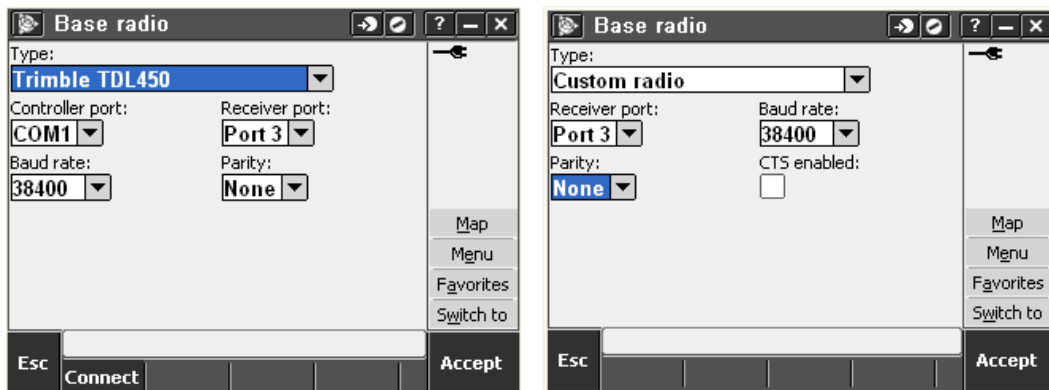
It is fixed in the RadioLink with the clamp in the rod. Suggested use



Software Settings

In order to set up the SETTOP RadioLink in the field software, the following setting must be taken into account.

One must modify/create the field software survey style that one usually employs.



One must select the correct radio Type in the list.

- "Trimble TDL" or "Custom Radio"

Communication speed between the receiver and the radio

- 38400 bps (it must coincide with the speed set in the radio in the [Serial Interface](#) tab)

Radio parity must be:

- None

The port of the receiver must be selected in accordance with the receiver used. This setting is valid both for using the radio as a Base and for Rover.

RadioLink – ADLCONF Settings

In order to connect the SETTOP RadioLink to the PC and set it up, one must connect the radio to the *Radio Link* port and, at the other end, to the RS232/USB Port of the computer.

Accessing the ADLCONF program of Pacific Crest makes it possible to fully set up the radio (one may need a key or dongle for certain settings).

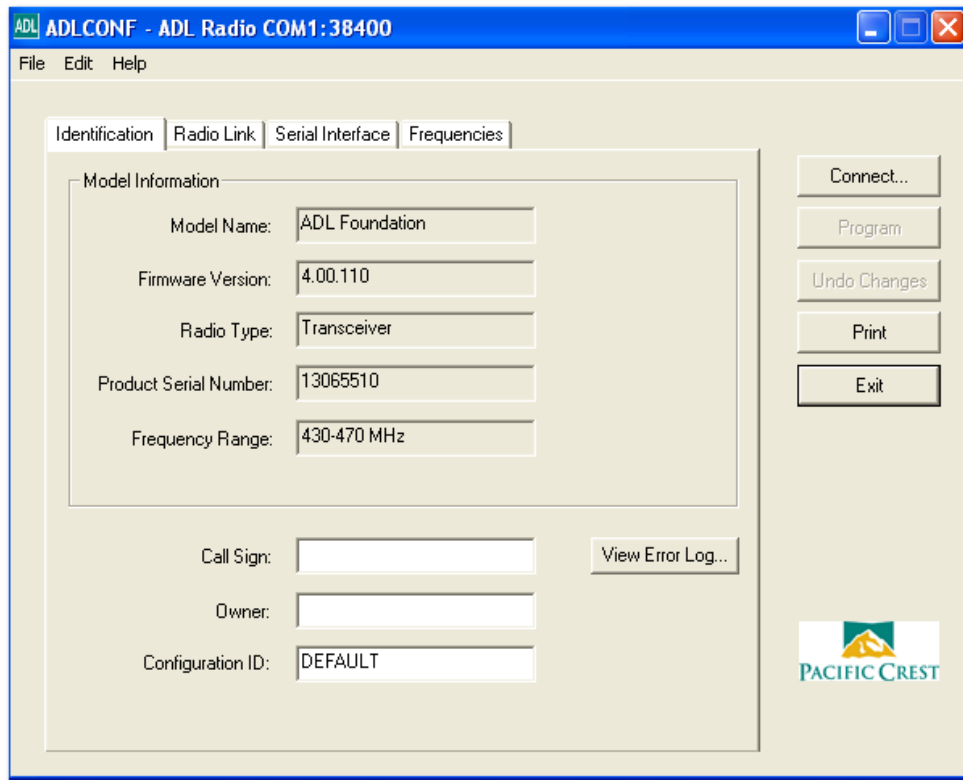
The last version of the program may be downloaded free of charge at www.pacificcrest.com

Factory Default Settings

Description	Default Setting
Device Status	Battery status
Channel/Frequency	Channel No. and frequency (MHz)
Channel Tx Frequency	Channel No. and frequency (MHz)
Data Protocol	Transparent EOT (End of Transmission)
Radio Link Rate	9600
Operation Mode (Trimble protocol)	Base/Rover
Sensitivity	High (Rover)
Rx LED Meaning	Signal Received
Serial Baud	38000
Advanced Menus	Hide
CSMA	On
Security Code	Off
Edit Configuration	Enabled
Scrambling	On
Forward Error Correction	On

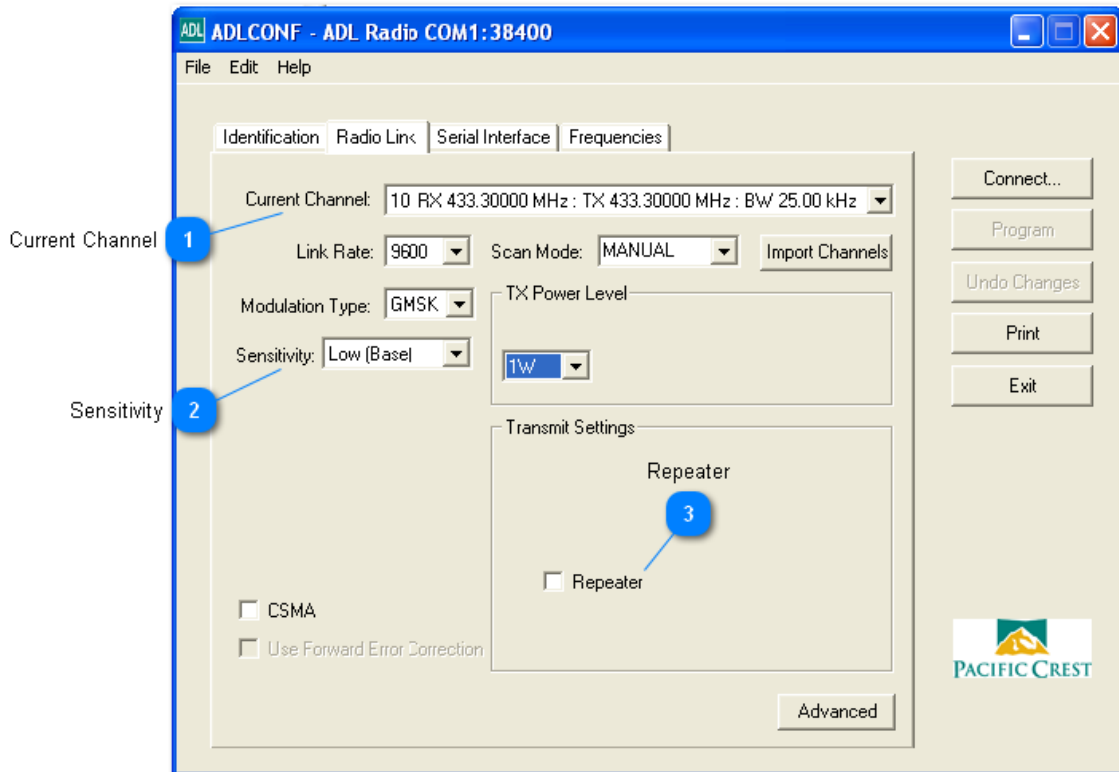
Identification

The fields in this tab are for information purposes and cannot be edited.



The initial *Identification* tab contains the information on the radio (firmware, frequency range, serial number, etc.)

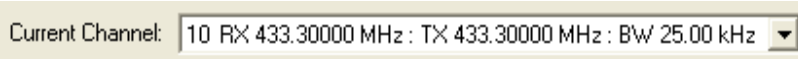
Radio Link



In the *Radio Link* tab, one can set up the characteristics of the radio link (speed, sensitivity, power level, repeater)

1

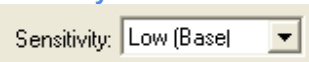
Current channel



One can select the active channel through which the transmissions will be made

2

Sensitivity

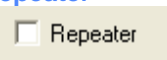


One can choose radio sensitivity. According to the use desired for the radio, one must select the correct channel, the following being recommended:

- Low (in basic mode)
- High (in mobile or repeater mode)

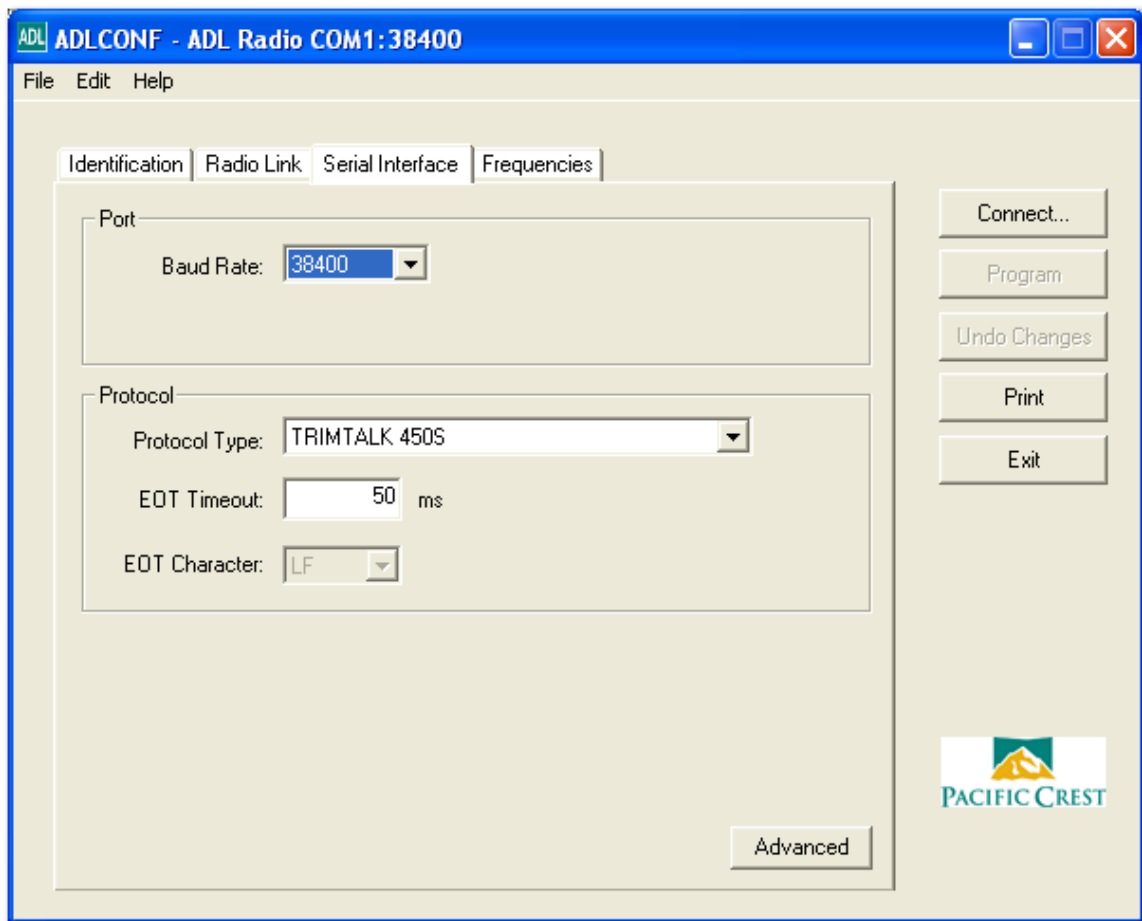
3

Repeater



The box must be activated if the radio is to be set up as a repeater.

Serial Interface

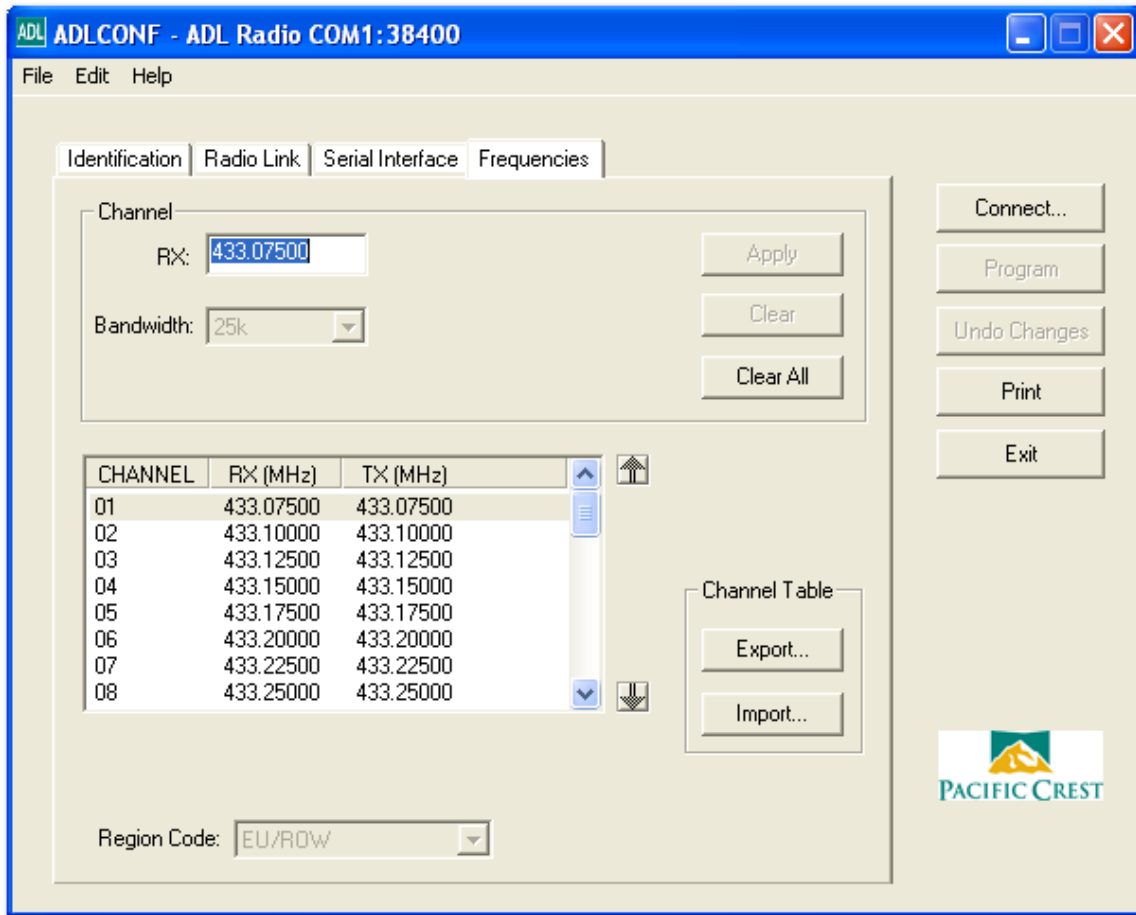


In the *Serial Interface* tab, one can set up the communication between the radio and the collector/PC and the protocol used.

You may choose from the different protocols:

- Transparent with EOT Timeout
- Transparent with EOT character
- Packet Switched
- TRIMTALK 450S
- TRIMTALK II/IE
- TT450S (HW)
- TRIMMARK 3
- SATEL
- Transparent FST
- South
- Stonex Type 1
- U-Link

Frequencies

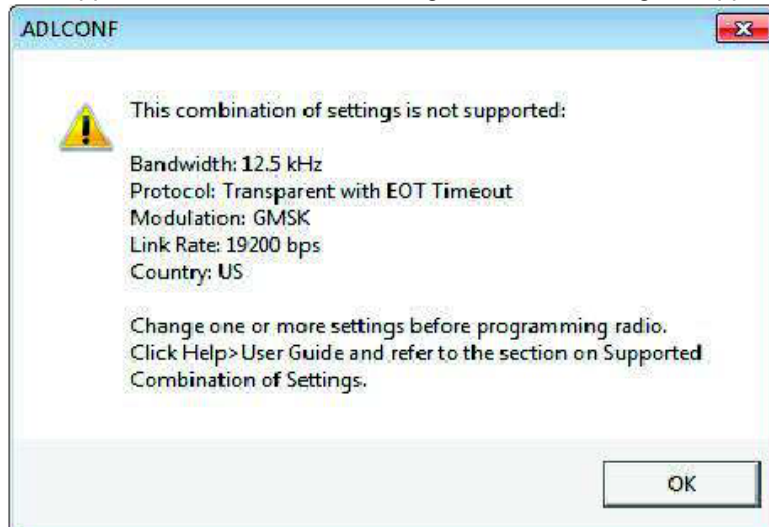


In the *Frequencies* tab, you can set up the table for Transmit and Receive channels. In order to create a specific table of frequencies, it will be necessary to have the key for creating them. Should you not have that key, you may contact your distributor and request the table. You will be able to import the file provided by your distributor.

Combinations supported

Combinations supported between the different setting options. Not all options are mutually compatible.

If you attempt an unsupported combination, a message like the following will appear:



12.5 kHz Channel Bandwidth

Protocol Type	Modulation Type	Radio Link Rates (bps)
Transparent EOT/EOC and Packet Switched	GMSK	4800
Transparent EOT/EOC and Packet Switched	4FSK	9600
Transparent FST	4FSK	9600
TRIMTALK 450s	GMSK	4800, 8000
TRIMMARK II/IIe	GMSK	4800
TT450S (HW)	GMSK	4800
TRIMMARK 3	GMSK	9600 (USA)
SATEL	4FSK	9600
U-Link	GMSK	4800

25 kHz Channel Bandwidth

Protocol Type	Modulation Type	Radio Link Rates (bps)
Transparent EOT/EOC and Packet Switched	GMSK	4800*, 9600*
Transparent EOT/EOC and Packet Switched	4FSK	19200
Transparent FST	4FSK	19200
TRIMTALK 450s	GMSK	4800*, 9600*, 16000*
TRIMMARK II/IIe	GMSK	4800*
TT450S (HW)	GMSK	4800*, 9600*
TRIMMARK 3	GMSK	19200 (USA)
SATEL	4FSK	19200
South	GMSK	9600*
Stonex Type 1	GMSK	9600*
U-Link	GMSK	N/A

* According to the US FCC all transmissions within the US in 25 kHz channels must use a radio link rate at least 19200 bps. See the next section on US narrowbanding regulations.