

 **SyQwest Incorporated**

Bathy-2010™

High-Resolution CHIRP Sub-Bottom Profiler

Bathy-2010

Bathy-2010P



Portable Rackmount

- ◆ Full ocean depth capable, Dual Channel, FM CHIRP.
- ◆ Bottom penetration to 300+ meters, with up to 8cm of marine sediment strata resolution.
- ◆ Windows XP Operating System and PCI Architecture offers flexibility on peripheral devices.
- ◆ Raw data or processed data storage in SEG-Y format.
- ◆ Improved Bottom Tracking on steep slopes.
- ◆ Enhanced Zoom Mode capabilities including: Bottom Zoom, Bottom Lock Zoom, and Marker Zoom.
- ◆ DGPS, Heave Compensation and Sound Velocity inputs.



SyQwest inc

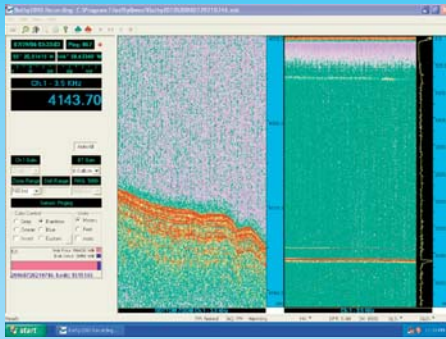
222 Metro Center Blvd. / Warwick, RI 02886

Tel: (401) 921-5170 Fax: (401) 921-5159

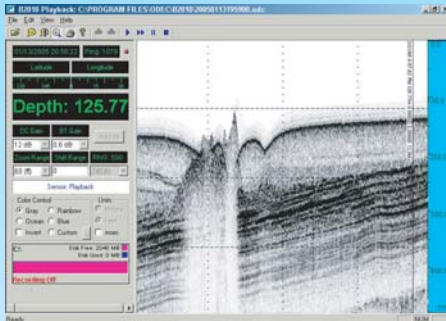
Email: sales@syqwestinc.com Web: www.syqwestinc.com

Bathy-2010™

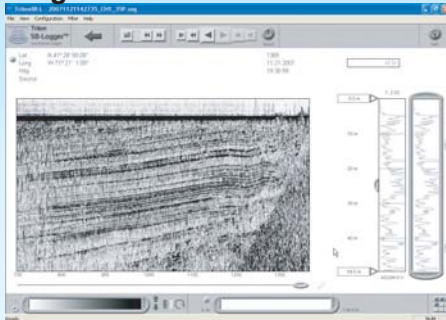
Deep Ocean
Laminated Sediments



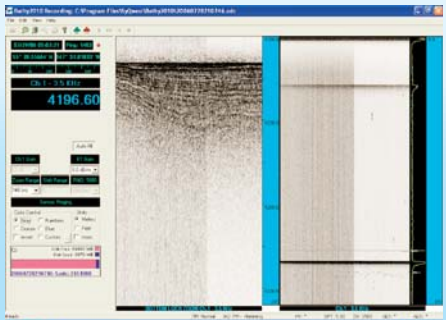
300 Meter Sediment Penetration



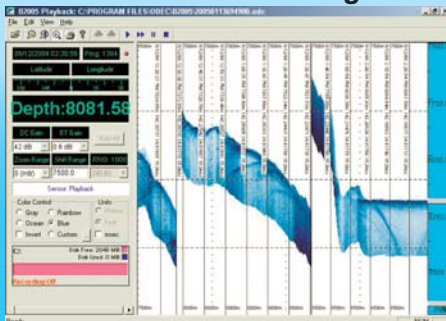
High Resolution Strata



Bottom Zoom



Proven Bottom Tracking



SPECIFICATIONS

Units:	Feet or Meters
Depth Ranges:	15, 30, 60, 120, 240, 480, 800, 1500, 2400, 3000, 6000, 15000, 30000 Feet 5, 10, 20, 40, 80, 150, 300, 500, 750, 1000, 2000, 5000, 12000 Meters
Draft Offset:	0 to 30 feet (10 meters)
Manual Gates:	Shallow & Deep (0.1 ft / -.1 mt resolution)
Shift Range:	1 Ft (1 mt) increments to bottom of selected range.
Zoom Range:	30, 60, 120, 240, 480, 960, 1920 Feet 10, 20, 40, 80, 160, 320, 640 Meters
Zoom Modes:	Bottom Zoom, Bottom Lock, Marker Zoom,
Display:	Normal Data, Zoom Data, Navigation, Depth, Command/Status, Color Control for Data: 4 Selections or Custom (User Input), Data Color Invert possible
Sound Velocity:	4590-5250 Feet/Second (1400-1600 Meters/Second) 1 ft/sec (1 mt/sec) increment
Strata Resolution:	8 cm with > 300 Meters of bottom penetration (bottom type dependent)
Depth Resolution:	0.1 Feet, 0.1 Meters
Navigation Input:	NMEA 0183, GLL, GGA, RMC, VTG, VHW, HDT Selectable Baud Rates, RS-232
Data Output:	NMEA0183, DPT, DBT, PMC, ODEC, ODC
Data Interface:	SYQWEST B2010 Interface, High Speed Serial (RS-422)
Printer Output:	Parallel Port Interface to TDU, EPC, and iSys Thermal Printers
Depth Limits:	Minimum: < 2.5 Meters (freq dependent), Maximum: 12000 Meters (@ 3.5KHz or 12KHz)
Transmit Rate:	Up to 4 Hz, depth and operator mode dependant.
Event Marks:	Periodic, External, and/or Manual (Periodic selectable in 1 minute intervals)
ODC File Storage:	Stores Depth, Navigation, and Graphic Data in ODC format (Proprietary) Normal and Zoom Data stored is Pixel data and can be played back and /or printed as it was captured during acquisition
SEGY File Storage:	Stores in industry standard SEGY format. Either Raw data or Processed data may be selected.
Data File Playback:	Both ODC & SEGY Files can be played back and / or printed at Normal or Fast-Forward speed, with Pause.
Frequencies	4 Software Selectable/Channel, 3.5KHz, 12KHz, 18KHz, & 33KHz Standard, 1KHz - 200KHz optional
Transmit Output Power:	100W - 10KWatts (Pulsed), 20% Duty Cycle, 8 Software Selectable Levels
Input Power:	110 - 220VAC, 50-60Hz
Dimensions:	19" Rackmount system (size dependent upon configuration)
Environmental:	10°C to +50°C Operating Temperature (-25°C to +90°C Storage)