

SV & CTD Profilers

Base•X₂ & Minos•X

Offering the best profiler and sensor technology of today in a compact form, Base•X₂:

- features embedded WiFi connectivity and GPS geo-referencing. Data is automatically downloaded and processed into desired manufacturer formats, saving valuable time for the operator.
- converts from an SVP to a CTD profiler with the switch of a single sensor head.
- is available rated to 100 m and 500 m.

Surveying beyond 500 m? Our most popular profiler, Minos•X, is:

- known for its rugged performance and ease of use.
- the smallest combined CTD/SVP on the market.
- rated to 1000 m in acetal, 6000 m in titanium.



Minos•X


NEW!



Base•X₂

Name & Product Code	No. of Ports	Size (dia. x length, mm)	Communications	Input Voltage (v)	Materials	Max. Depth (m)	Weight in Air (kg)	Weight in Water (kg)
BASE•X ₂ PDC-BSX2-P1S1-01	2	69 x 390	WiFi, RS-232, RS-485	9-28	Acetal	100	1.17	0.49
BASE•X ₂ PDC-BSX2-P1S1-05						500		
MINOS•X PDC-MNX-P1S2-10 PDC-MNX-P2S1-10	3	76 x 597	RS-232, RS-485, WiFi	8-26	Acetal	1000	2.23	0.73
MINOS•X PDC-MNX-P1S2-60 PDC-MNX-P2S1-60	3				Titanium	6000	4.67	3.14

	Product Code	Max. Depth (m)	Range	Precision (+/-)	Accuracy (+/-)	Resolution	Response Time
SV•Xchange™	XCH-SV-STD	6000	1375-1625 m/s	0.006 m/s	0.025 m/s	0.001 m/s	47 μs
P•Xchange™	XCH-PRS-0050 to XCH-PRS-6000	As per range	50, 100, 200, 500, 1000, 2000, 4000, 5000, 6000 dBar	0.03% FS	0.05% FS	0.02% FS	10 ms
CT•Xchange™	XCH-CT-RA-090-n545	6000	CND: 0-90 mS/cm ¹ TMP: -5-45 °C ²	CND: 0.003 mS/cm TMP: 0.003 °C	CND: 0.01 mS/cm TMP: 0.005 °C	CND: 0.01 mS/cm TMP: 0.005 °C	CND: 25 ms ³ TMP: 100 ms



Want WiFi on your profiler? All X•Series profilers are compatible with Data•Xchange, the WiFi and embedded GPS device saving time for hydrographers around the world by transferring and exporting data wirelessly and automatically.

WiFi Range: >20m
 GPS Accuracy: <5m
 Current Draw: 70 mA
 Current Draw in Water: 50 mA
 Speed: up to 300 kB/s
 Maximum Depth: 1000m

¹ Will over-range to 100 mS/cm. Inquire for specifications.

² Will over-range to 60 °C. Inquire for specifications.

³ At 1 m/s flow

sound velocity / pressure / conductivity - temperature / turbidity / biofouling control

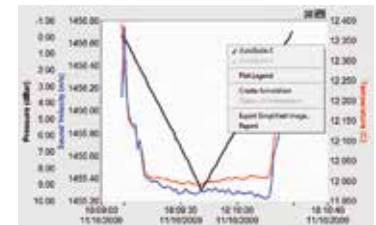
Micro•X is a real-time, single parameter instrument. Designed primarily for MBES, hull mounted applications, and vehicle integration, this SV probe in miniature pairs with Base•X2 or Minos•X to provide a total SV package.

Common cable lengths available with standard, Teledyne RESON, R2Sonic, and Kongsberg connectors. Custom configurations are available on request.



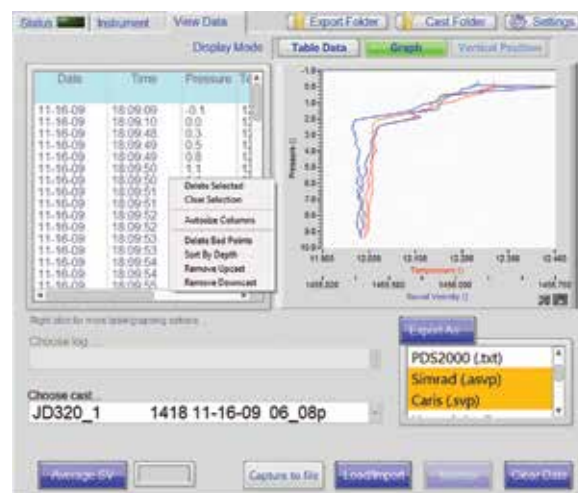
Name & Product Code	Size, mm (dia. x length)	Communications	Input Voltage (v)	Materials	Max Depth (m)	Weight in Air (kg)	Weight in Water (kg)
MICRO•X PDC-MIX-P1S0-60	33 x 240	RS-232, RS-485	8-26	Titanium	6000	0.39	0.25

	Product Code	Max. Depth (m)	Range	Precision (+/-)	Accuracy (+/-)	Resolution	Response Time
SV•Xchange™	XCH-SV-STD	6000	1375-1625 m/s	0.006 m/s	0.025 m/s	0.001 m/s	47 μs



SeaCast provides an intuitive interface with X•Series instrumentation, offering easy instrument setup, data collection and management, and exporting tools.

- Automated connection and workflow via wireless or cable
- Instrument and sensor details displayed
- Calibration certificates printed on demand
- Automatic or manual data filtering
- Offline access to existing casts for post-processing
- Show live data on multiple graphs concurrently
- Graph editing and annotation for export
- Automated data export functionality
- Simultaneous export to multiple data formats, including:
 - Hypack
 - Quinsy
 - Kongsberg
 - Sonardyne
 - PDS 2000
 - CARIS
 - CARIS (concatenated)
 - HIPAP
 - CSV
 - Custom



T: +1-250-656-0771

E: sales@AMLoceanographic.com

T: +1-800-663-8721 (NA)

W: www.AMLoceanographic.com

F: +1-250-655-3655

2071 Malaview Avenue Sidney, British Columbia Canada, V8L 5X6

