



ECHOES 3500

THE MEDIUM TO FULL OCEAN DEPTH
SUB-BOTTOM PROFILER

ECHOES 3500 has built its reputation with the **ECHOES 3500 T7**, the 7-transducer full ocean depth hull-mounted solution that has been in successful operation for years onboard the oceanographic vessels of the Ifremer and other international hydrographic ships. Building on the success of **ECHOES 3500 T7**, **ECHOES 3500 T3** is the medium ocean depth configuration offering even more flexibility as it can be hull or pole mounted. Together with DELPH seismic acquisition, **ECHOES 3500** is a full-feature survey tool with DELPH interpretation high-productivity software.

FEATURES

- Flat-spectrum, high-directivity chirp emission
- Hull or pole-mounted solution (T3)
- Full HW/SW package with compact topside unit
- Worldwide **iXBlue** presence

BENEFITS

- Unrivaled low-distortion data and penetration
- Equipment transferable to other vessels
- Straightforward installation and reliable operation
- 24/7 advice and support

APPLICATIONS • Full ocean depth survey (T7) • Shallow to medium ocean depth survey (T3)
• Defense, geotechnical and cable route investigation • Windfarm and renewable energy
• Modernization and refurbishment programs • EEZ mapping • Continental shelf survey



ECHOES 3500

TECHNICAL SPECIFICATIONS



ECHOES 3500 T3



ECHOES 3500 T7

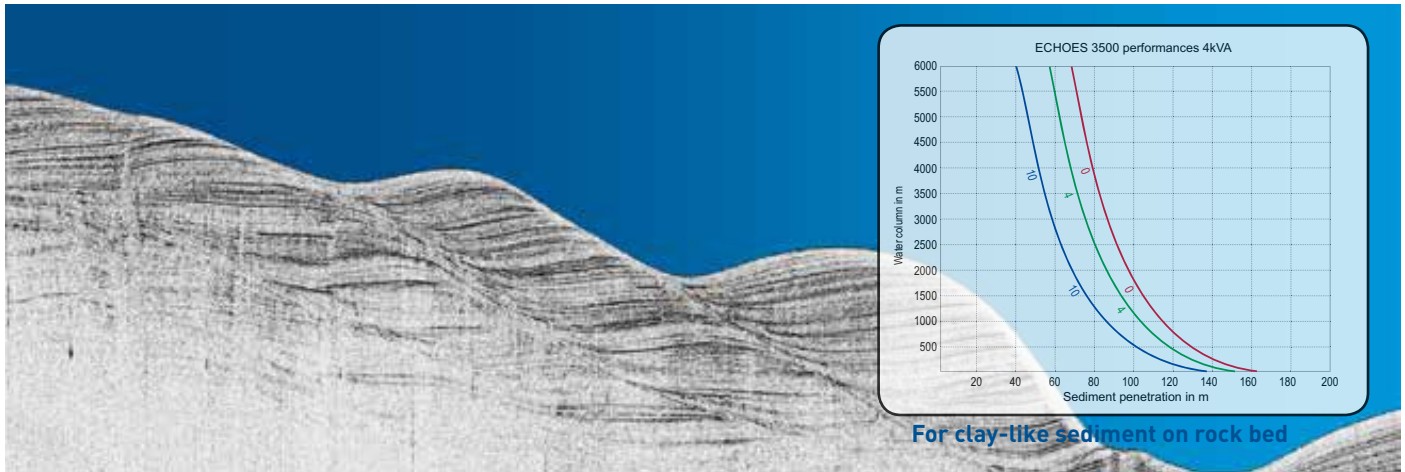
PERFORMANCE

Max water column ⁽¹⁾	1500 m	11000 m
Frequency range	1.7 - 5.5 kHz	
Equivalent acoustic level (ref 1 μ Pa@1m)	230 dB 2 kVA	237 dB 4 kVA
Resolution (sediment and chirp dependent)	20 cm	
Frequency response	Flat spectrum	
Digital data format	24-bit raw data/Segy 32 bits floating point	
Available pulses	AM-FM/User-designed and chirp library	
Directivity @ 3 500 Hz	30°	20°
Operational configuration	Pole or hull-mounted	Hull-mounted
Transmission power	2 kVA (4 kVA option)	4 kVA (6 kVA option)

PHYSICAL CHARACTERISTICS

Array configuration	3 Tonpitz transducers	7 Tonpitz transducers
Array dimensions (Ø x H)	Ø 680 mm / H= 400 mm	Ø 980 mm / H= 400 mm
Array weight in air / water	160 kg / 120 kg	363 kg / 265 kg

(1) Performance depends on environment, noise conditions and amplifier output power



Specifications subject to change without notice

www.ixblue.com • EMEA: +33 1 30 08 88 88 • AMERICAS: +1 888 600 7573 • APAC: +65 6747 4912

